

# PVC COATED FABRIC

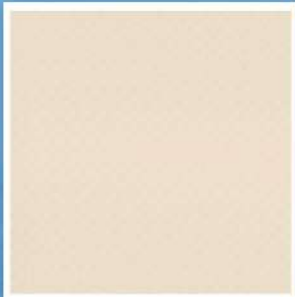
FOR ALL APPLICATIONS



//// INDUSTRY DOORS

 **extruflex**

# //// AVAILABLE RANGE



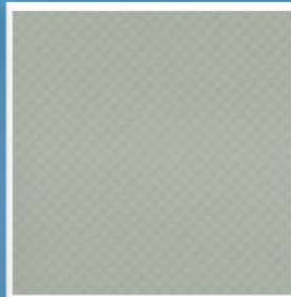
**RAL 1013**



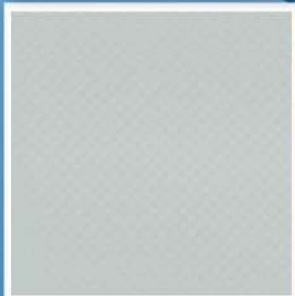
**RAL 5010**



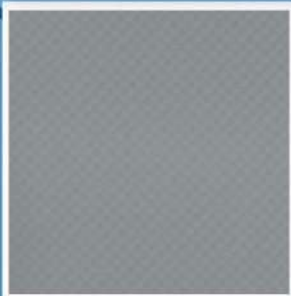
**RAL 5002**



**RAL 7038**



**RAL 7035**



**RAL 7037**



**RAL 7016**



**RAL 6026**



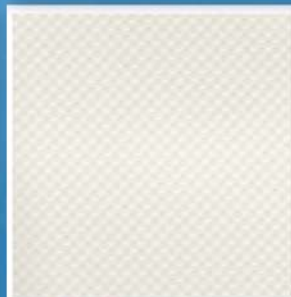
**RAL 3002**



**RAL 1021**

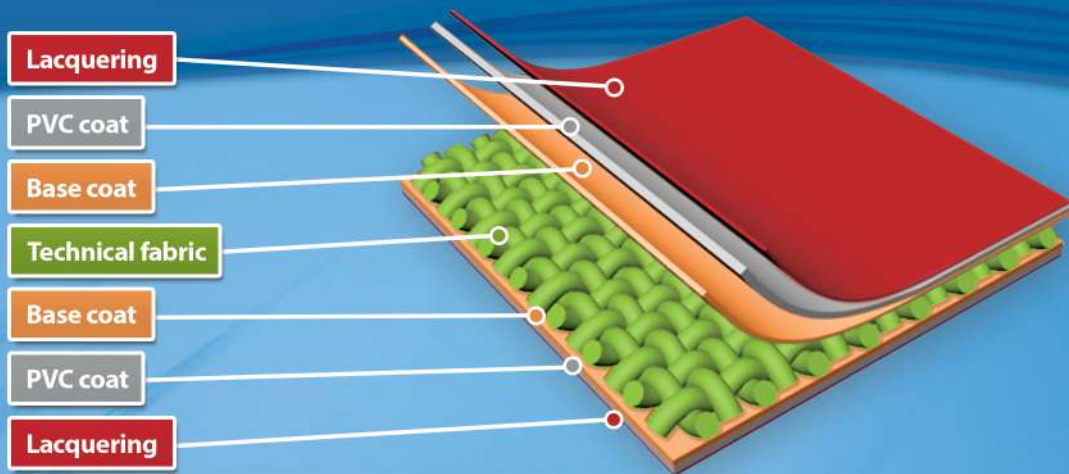


**RAL 2004**



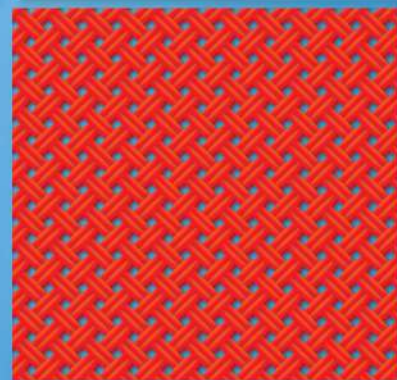
**RAL 9010**

All products are available in  
900 gsm 3 m width 300 m length



PHYSICAL PROPERTIES PROPRIETES PHYSIQUES EIGENSCHAFTEN	TEST METHOD METHODE PRÜFUNG	UNIT UNITE EINHEIT	900 gsm
REFERENCE REFERENCE REFERENZ	-	-	900
TOTAL WEIGHT POIDS TOTAL GESAMTGEWICHT	DIN EN ISO 2286-2	g/m <sup>2</sup>	900
LENGTH LONGUEUR LÄNGE	-	M	300
BASE FABRIC TOILE DE BASE GRÜNDSTOFF	1100 Dtex	-	P2/2 12x12 (30x30)
UV STABILIZED STABILITE UV UV STABIL	-	-	✓
FINISH FINITION AUFTAUCHEN	-	-	GLOSSY / MATT BRILLANT / MAT GLANZEND / MATT
TEMPERATURE MIN/MAX TEMPERATUR MIN/MAX	DIN EN 1876-1	°C	30°C ~ 70°C
TEAR RESISTANCE RESISTANCE DECHIRURE WEITERREIßFESTIGKEIT	DIN 53363	N	550 / 500
TENSILE STRENGTH RESISTANCE RUPTURE REIßKRAFT	DIN EN ISO 1421	N / 5cm	4000 / 4000
ADHESION ADHERANCE HAFTFESTIGKEIT	EN ISO 2411	N / 5cm	> 100
LIGHT TRANSMISSION TRANSMISSION LUMIERE LICHTÜBERTRAGUNG	ISO 13468-1	%	5

### Panama Weaving P2/2 12x12



Other weight could be provided upon request

Weight (-0/+20 gsm); Width Tolerance (±10mm)

The data contained in this technical specification is given for information only and is based on our current knowledge of the products concerned.

This information is given in good faith to inform and to help in search, does not constitute any formal or implicit guarantees as to its use.

01/09/2022



# extruflex

