



**extruflex**

flexible vinyl extrusion world leader



# **FLEXIBLE PVC FILM**

**WINDOW, DOOR AND PARTITION**

# WORLD LEADER IN EXTRUSION OF FLEXIBLE PVC, EXTRUFLEX DEVELOPS, PRODUCES AND DISTRIBUTES STRIPS, SHEETS AND FLEXIBLE TRANSPARENT FILMS.

With over 65 years of international manufacturing experience we manage interactions with our customers in order to provide you with concrete solutions to meet your existing and future challenges.

Extruflex has 3 production sites and 9 sales subsidiaries around the world.

## QUALITY, COMMITMENT AND SERVICE INFLUENCE AND DRIVE OUR ACTIONS IN EVERYDAY LIFE.

### /// TECHNICAL CHARACTERISTICS



All our products are  
**NON PHTHALATE**



Transparency



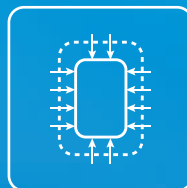
Non-sticky



Weldability



Complying with the  
European REACH  
regulation  
*(Verified by Bureau Veritas)*



Low shrinkage



Low-loss at the  
end of roll



UV / Marine  
Grade



Eco-friendly policy



Production waste  
Recycling



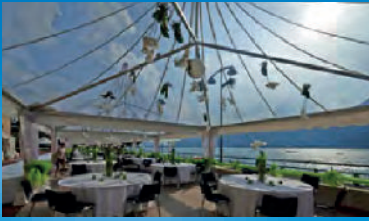
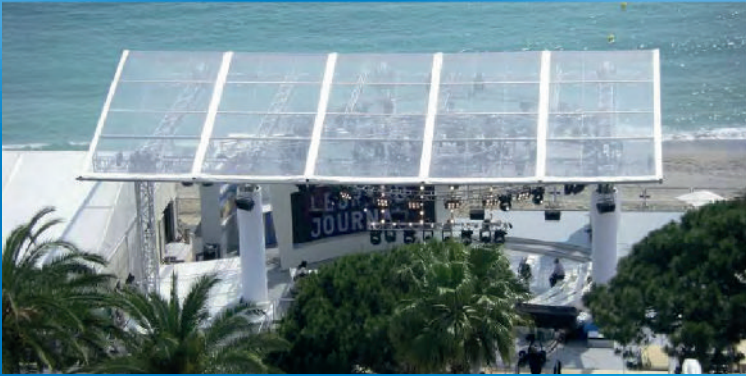
Fire retardant  
NFPA-701  
CSFM TITLE 19



Cold resistance



# /// OUR APPLICATIONS





# /// PRODUCT RANGE

Product	Width	Thickness	Length	Yard <sup>2</sup> /roll
<b>Double-Polished Clear Anti-UV</b> REF 425	54"	.012"	213'	106.5
	54"	.020"	150'	75
	54"	.030"	90'	45
	54"	.040"	65'	32.5
<b>Fire-Rated Clear Anti-UV (NFPA-701)</b> REF 690	54"	.012"	213'	106.5
	54"	.020"	150'	75
	54"	.030"	90'	45
	54"	.040"	65'	32.5
<b>Marine-Grade Clear High UV Reistance</b> REF 683	54"	.012"	213'	106.5
	54"	.020"	150'	75
	54"	.030"	90'	45
	54"	.040"	65'	32.5



**PALLETIZING  
IN 16 ROLLS**



**Products available  
and in stock.**

**\*All other products available by  
special order / could become stock  
products under blanket PO.**

# /// EXTRUFLEX FLEXIBLE PVC FILM

PHYSICAL PROPERTIES	TEST METHOD	UNIT	.012"	.012"	.020"	.020"	.030"	.030"	.040"	.040"
REFERENCE	-	-	REF425 /683	REF690	REF425 /683	REF690	REF425 /683	REF690	REF425 /683	REF690
WIDTH	-	Inches	54"	54"	54"	54"	54"	54"	54"	54"
LENGTH	-	Feet	213'	213'	150'	150'	90'	90'	65'	65'
HAND	-	-	35	35	35	35	35	35	35	35
WEIGHT/roll	-	LBs	75	79	86	88	77	79	77	79
WEIGHT/Yard <sup>2</sup>	-	LBs	0.70	0.74	0.80	0.82	0.72	0.74	0.72	0.74
WEIGHT/Foot	-	LBs	0.35	0.37	0.57	0.59	0.86	0.88	1.19	1.22
FINISH	-	-	SUPER DOUBLE POLISHED							
COLOR	-	-	CRYSTAL CLEAR							
UV STABILIZED	-	-	Yes	Yes	Yes	Yes	Yes	Yes	Yes	Yes
FIRE RETARDANT	NFPA-701 CSFM TITLE 19	-		Compliant		Compliant		Compliant		Compliant
LOW-TEMPERATURE BRITTLENESS	ASTM D746	C F	-40 -40	-25 -13	-40 -40	-10 -14	-35 -31	-8 18	-30 -22	-7 19
TEAR RESISTANCE	ASTM D1004-13	N	21.2 (X) 19.8 (Y)	19.3 (X) 17.2 (Y)	34.2 (X) 32.2 (Y)	31.3 (X) 29.1 (Y)	58.5 (X) 56.3 (Y)	52.4 (X) 51.5 (Y)	69.5 (X) 66.7 (Y)	67.2 (X) 64.9 (Y)
TENSILE STRENGTH	ISO 527-1:2012 ISO 527-3:2001	MPa	25.6 (X) 29.3 (Y)	23.2 (X) 28.7 (Y)	23.7 (X) 25.3 (Y)	21.0 (X) 22.4 (Y)	24.2 (X) 27.4 (Y)	21.6 (X) 23.4 (Y)	20.5 (X) 25.5 (Y)	18.4 (X) 22.7 (Y)
ELONGATION AT BREAK	ISO 527-1:2012 ISO 527-3:2001	%	350 (X) 320 (Y)	340 (X) 310 (Y)	360 (X) 310 (Y)	350 (X) 300 (Y)	370 (X) 350 (Y)	350 (X) 300 (Y)	380 (X) 420 (Y)	370 (X) 310 (Y)
HEAT SHRINKAGE (80°C, 10 min.)	DIN 53377:2007	%	0.7 (X) -2.2 (Y)	0.9 (X) -2.7 (Y)	0.6 (X) -2.9 (Y)	0.9 (X) -3.2 (Y)	1.0 (X) -2.8 (Y)	1.0 (X) -3.1 (Y)	0.9 (X) -2.9 (Y)	1.1 (X) -3.1 (Y)

FIRE RETARDANT

Other sizes could be provided upon request  
Thickness Tolerance (±0.05mm); Width Tolerance (+10mm ; -0mm)  
(X): test proceeded in the width axis  
(Y): test proceeded in the length axis

The data contained in this technical specification is given for information only and is based on our current knowledge of the products concerned.  
This information given to our customer in good faith to inform him and to help him in his search, does not constitute any formal or implicit guarantees as to its use.

# WE REMAIN AT YOUR DISPOSAL FOR ANY SPECIFIC REQUESTS

# /// OUR LOCATIONS



## **EXTRUFLEX do Brazil**

Tel. : +55 (41) 3019 2530  
contact-edb@extruflex.com

## **EXTRUFLEX France HQ**

Tel. : +33 (0)1 41 49 99 30  
contact-lvp@extruflex.com

## **EXTRUFLEX Usine**

Tel. : +33 (0)4 92 20 99 01

## **EXTRUFLEX Germany**

Tel. : +49(0) 2203 102 45 81  
contact-gmbh@extruflex.com

## **EXTRUFLEX Asia-Pacific**

Tel. : +86 0760 22289080  
t.tan@zs-extruflex.com

## **EXTRUFLEX Italy**

Tel. : +39 011 19857747  
contact-it@extruflex.com

## **EXTRUFLEX North America**

Tel. : +1 888 501 1095  
info@extruflexna.com

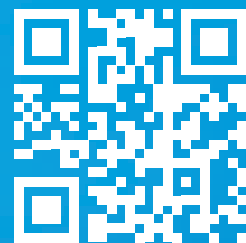
## **EXTRUFLEX UK**

Tel. : +44(0)1454 322 3351  
contact-uk@extruflex.com

## **EXTRUFLEX Russia**

Tel. : +7 919 990 1590  
info@extruflex.com

**FOR MORE DETAILS  
ABOUT OUR PRODUCTS**



**EXTRUFLEX.COM**